

Asanti is your **trusted partner** for comprehensive Data Centre facilities and services, delivering the **highest levels of security** and resiliency to give you **peace-of-mind**. Located **strategically across the UK** for minimum latency, all Asanti Data Centres are **powered by 100% Renewable Energy** and operate in accordance with the Uptime Institute's **Tier 3 Operational Standard**.

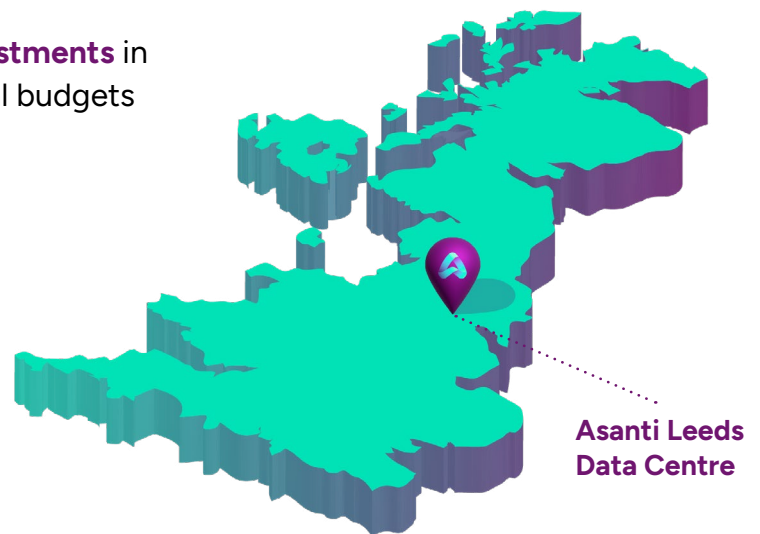
Experience **reliable** and **secure** data storage, **improved performance**, and **scalable solutions** at **competitive rates**.

Investing in the future

At Asanti, we prioritise **continuous** improvement and **future-proofing**.

We've already made significant **upgrade investments** in our data centres and have allocated additional budgets to further enhance our facilities as part of our **Continuous Improvement Lifecycle Plan**.

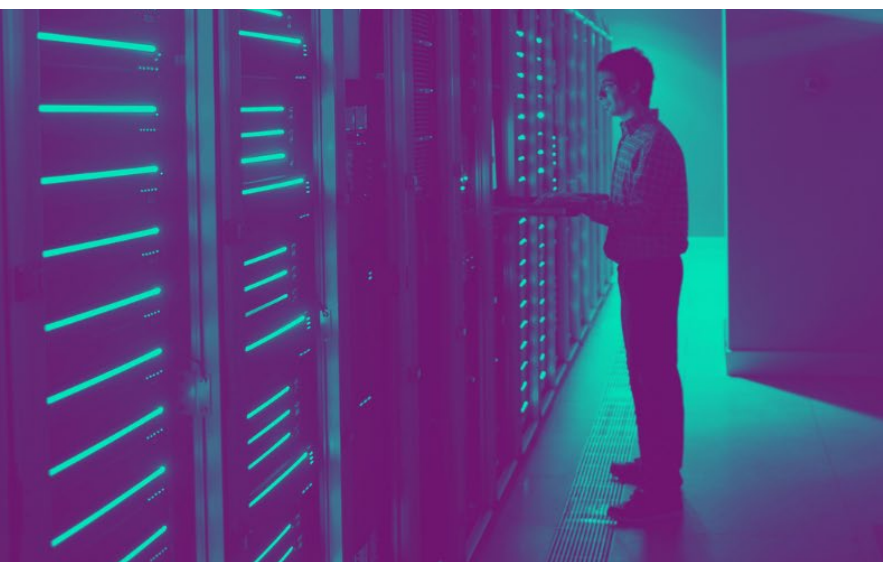
Our extensive Investment Plan reflects our commitment to providing **high-quality facilities** and services over the long term - that **adapt to market trends** and changing customer needs. By choosing Asanti, you benefit **both now and in the future**.



To support our aggressive growth strategy, we're actively seeking acquisitions and new builds.

To see our full list of locations and to stay updated on our latest offerings, visit:

asanti.com



Asanti Leeds Data Centre Specifications



and **scalable solutions at competitive rates.**

Core Services

- Co-Location Services
- Power (Metered as used)
- Network Services
- Internet
- Cloud Connect Services
- Monitoring
- Power to rack monitoring is standard
- Monitor of Devices in rack
- Smart Hands (Both Standard and Advanced)

Networks

- Fixed price or on-demand consumption models
- Resilient, high-capacity, low-latency connectivity with 100% uptime SLA
- Network Security
- Carrier neutral
- Well connected to major internet hubs in the UK
- All sites served by a variety of connectivity providers
- Ability to connect to major public cloud providers

Additional & Bespoke Services

Unlocking the true value of our services, Asanti goes above and beyond to meet your unique needs and challenges. We offer a comprehensive range of solutions that can be tailored specifically for your organisation, including:

- Bespoke Design, Build and Management
- Data Centre Relocation
- Outsourced Management
- Data Centre Consultancy
- Managed Services (Cloud, Cybersecurity)
- Project Management

Furthermore, our Full Partner Program enables you to maximise the benefits of our full range of offerings and forge strong collaborative relationships across our network of providers. We believe in being more than just a service provider - we strive to be your trusted partner, working hand-in-hand to achieve your goals.

Located for Resilience & Security

The physical location of a Regional Edge Data Centre is crucial to ensure the highest levels of resilience and security required. Our data centre locations have been strategically chosen based on excellent network connectivity and power availability.

Leeds Data Centre

- Postcode WF17
- 5 Miles from Leeds City Centre and ideally located for the M62, M1 and A1 and along all the main Fibre routes
- 15,000 sq. Ft IT White Space across 4 Data Halls

You will also benefit from the following:

- Access to Tier 1 Providers
- Direct access to Cloud Platforms (Cloud Connect) so your data never hits the public internet
- Diverse Fibre Ingress points and diverse routes from Carrier racks and Meet Me racks as standard
- Fully Controlled Environment with 100% Power SLA
- N+1 Cooling (electrical & pipework)
- 2 Dedicated Substations on site
- Each rack designed to 7KW with A & B Power feeds (higher capacity available on request)
- Green and Renewable power contracts
- 2N+1 Electrical Infrastructure
- Build room / Storage and work areas included
- 24/7/365 Staff onsite
- Full Coverage CCTV and Door Access Controls
- ISO9001:2015 & ISO27001:2022

Experience the added value and customisation of Asanti's services. To explore how we can tailor the right solution for you, contact us today at:

info@asanti.com